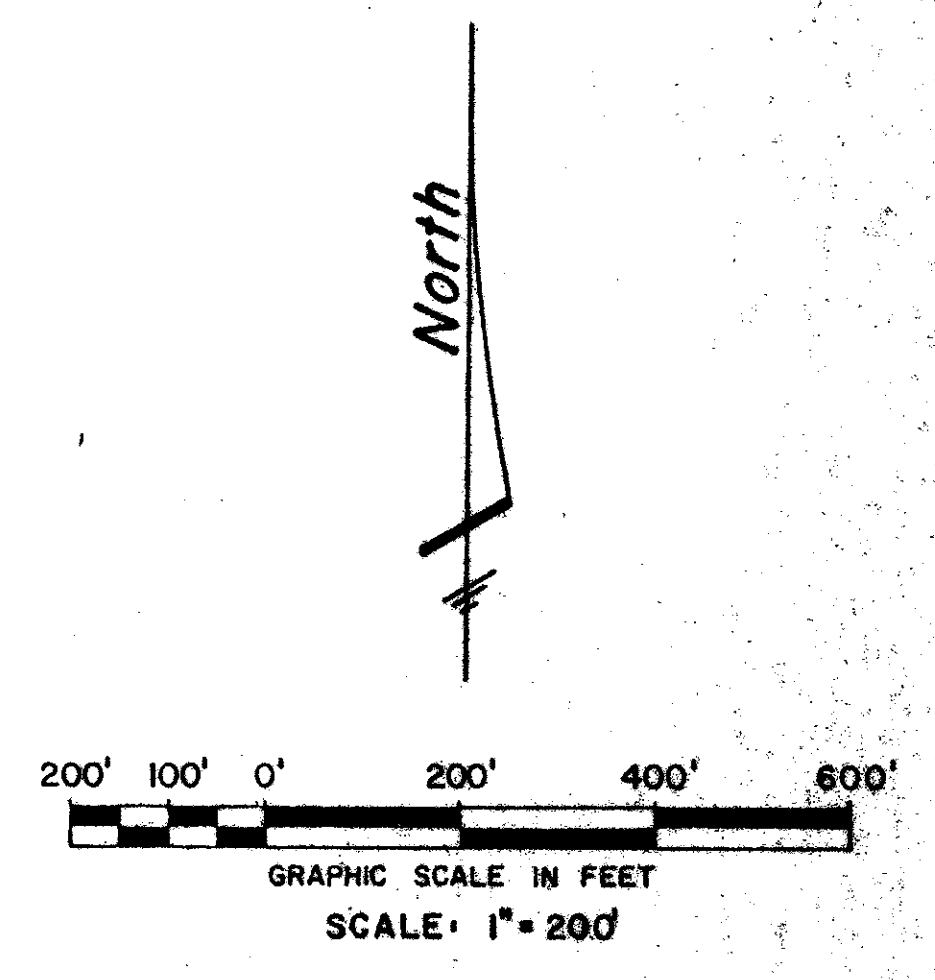
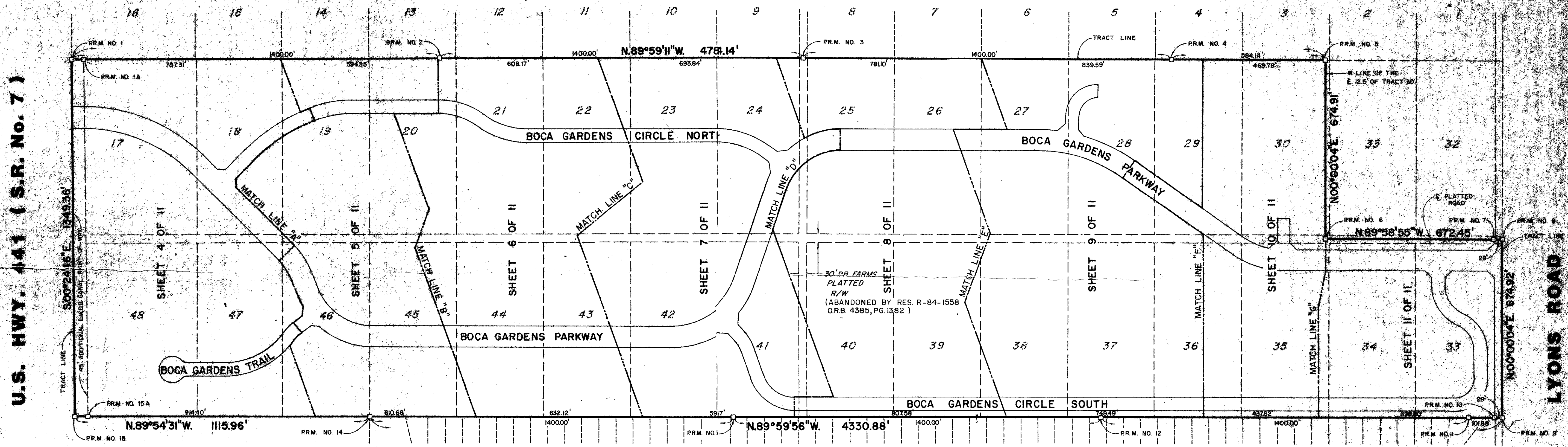


DRAWING NUMBER  
**50/27**

**50/27**



PALM BEACH FARMS PLAT NO. 3  
( P.B. 2, PGS. 45-54 )



U.S. HWY. 441 ( S.R. No. 7 )

SPANISH ISLES PLAT I REPLAT  
( P.B. 33, PGS. 58-59 )

SPANISH ISLES PLAT II  
( P.B. 37, PGS. 20-23 )

6/17/12  
 SUBDIVISION Boca Gardens  
 BOOK 50 PAGE 27  
 FLOOD ZONE B FLOOD MAP 215A  
 QUAD 53 ZONING RS  
 SE PUD ZIP CODE 33434  
 PUD NAME Boca Gardens

0407-000

**50/27**

PLAT OF  
**Boca Gardens**  
 ( A PUD )

PALM BEACH COUNTY	
M. J. BROWN & SONS, INC. CONSULTING ENGINEERS, LAND PLANNERS & SURVEYORS 300 ALTON WAY, LAKE PARK, FL 33402	
FIELD: M. BROWN	DATE: 03-11-12
OFFICE: P. ROOPE	DATE: AUGUST 1984
BY: [Signature]	DATE: [Signature]

DRAWING NUMBER

DRAWING NUMBER

DRAWING NUMBER

PLAN HOLD CORPORATION • IRVINE, CALIFORNIA  
 REGISTERED NUMBER 07184